

UPDATES FROM YOUR GW LIBRARY

December 2014

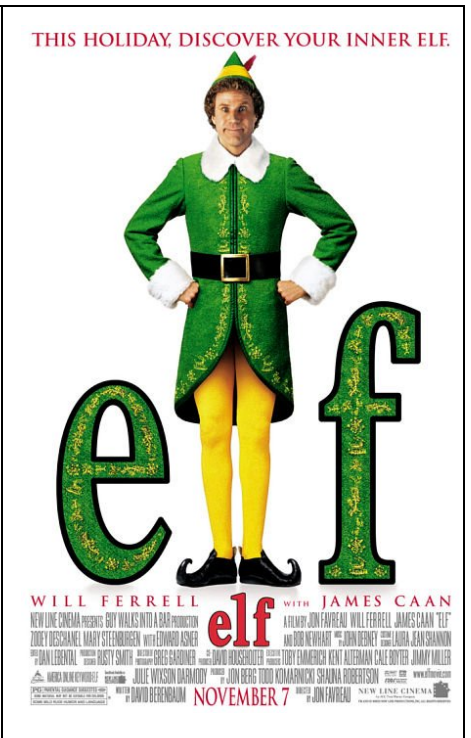
GW Library Holiday Film Festival

Tuesday, December 16

3:30-6:30

in your GW library

STUDENTS, FAMILY, and STAFF
ALL ARE WELCOME



ebooks, eAudiobooks, and more

The Department of Literacy: Libraries is pleased to announce the addition of a new collection of eBooks, Simultaneous View eBooks, World Language eBooks, and eAudiobooks to the CPS Virtual Library. This collection will provide resources to students to address multi-tiered systems of support, as well standards related to listening skills. These resources are available 24/7 from home or school.

- Access the CPS Virtual Library at <http://cps.edu/library>.
- Click on the high school library link.
- Click on the collection of your choice to browse.
- Alternately, you can perform a search on a specific topic and use the Format link at the left to list only the desired format.
- Use the password link at the top left to listen to selected items.

In addition, there are 162 new eBook titles in the CPS Virtual Professional Library. Click on the Professional Virtual Library link at <http://cps.edu/library>.

Music Mondays

The library will now be playing low-level instrumental music on Mondays. Stop by for a listen.

Winter Traditions around the World

Christmas is a popular celebration across the world, but did you know that other cultures have their own winter festivals? Some are celebrated for religious reasons, but some simply honor nature's transition from fall to winter. Check out your GW library for sampling of winter holidays from around the world.

The Big6 Research Model

Big6 is a six-stage model to help anyone solve problems or make decisions by using information. The Big6 information literacy process is used to identify information research goals, seek, use, and assemble relevant, credible information, then reflect. Contact Ms. Guevara for more information or to arrange a lesson.

1. [Task Definition](#)
2. [Information Seeking Strategies](#)
3. [Location and Access](#)
4. [Use of Information](#)
5. [Synthesis](#)
6. [Evaluation](#)



@gwlibrarycps



nguevara@cps.edu